

ELECTRIC ACTUATOR SA SERIES (Built-in Super Capacitor Type)

- Anodized with aluminium alloy and powder coating (Polyester, TGIC-Free) is followed for corrosion protection.
- The enclosure is rated IP67 and sealed with o-rings. It enables actuators to be installed outside. (IEC IP67, NEMA 4 and 6)
- 5W space heater is provided to protect internal components from condensation.
- The gears are self-locking mechanically.
- Included with the end of travel motor switches are two additional dry-contacts for auxiliary indication.
- 3 ISO mounting pads are provided for greater flexibility. (ISO5211)
- SA series with SCP are operated by the power of super capacitor in case of power failure.
- Depending on user's requirement actuators can stop at current position or they can be driven to open or close position.
- When LED lamp blinks super capacitor has to be charged. If super capacitor is fully charged it stops blinking.



SA005L/SA009L Type

PERFORMANCE

Model	Output Torque		Operating Time (90°) sec	Rated Current (A)				Motor Class (W) DC MOTOR	Number of Handle Turns	Weight kg
	Kg.m	N.m		DC24V	DC48V	110V	220V			
SA005L	5	50	8	2.25	1.2	0.8	0.51	15	6	4.3
SA009L	9	90	13	2.25	1.2	0.8	0.51	15	4.5	4.3

STANDARD SPECIFICATION

Indicator	Dome type (No LED Light)	Enclosure	Weatherproof enclosure IP67 Nema 4 and 6
Ambient temperature	-20°C to 70°C	Power supply	AC110V / AC220V 50/60Hz / DC24V / DC48V
Limit switches	2 Open/Close + Dry contact 2 Open/Close	Travel angle	90° ± 5°
Manual operation	By L-wrench (6mm hexagon)	Self locking	Provided by means of worm gearing
Space heater	5W	Cable entries	A cable gland is provided.
Lubrication	Shell Gadus S2 V220 2	Consist of Materials	Steel, Aluminium alloy, bronze
Surface treatment	Anodizing	External coating	Polyester (TGIC-free)

OPTIONAL SPECIFICATION

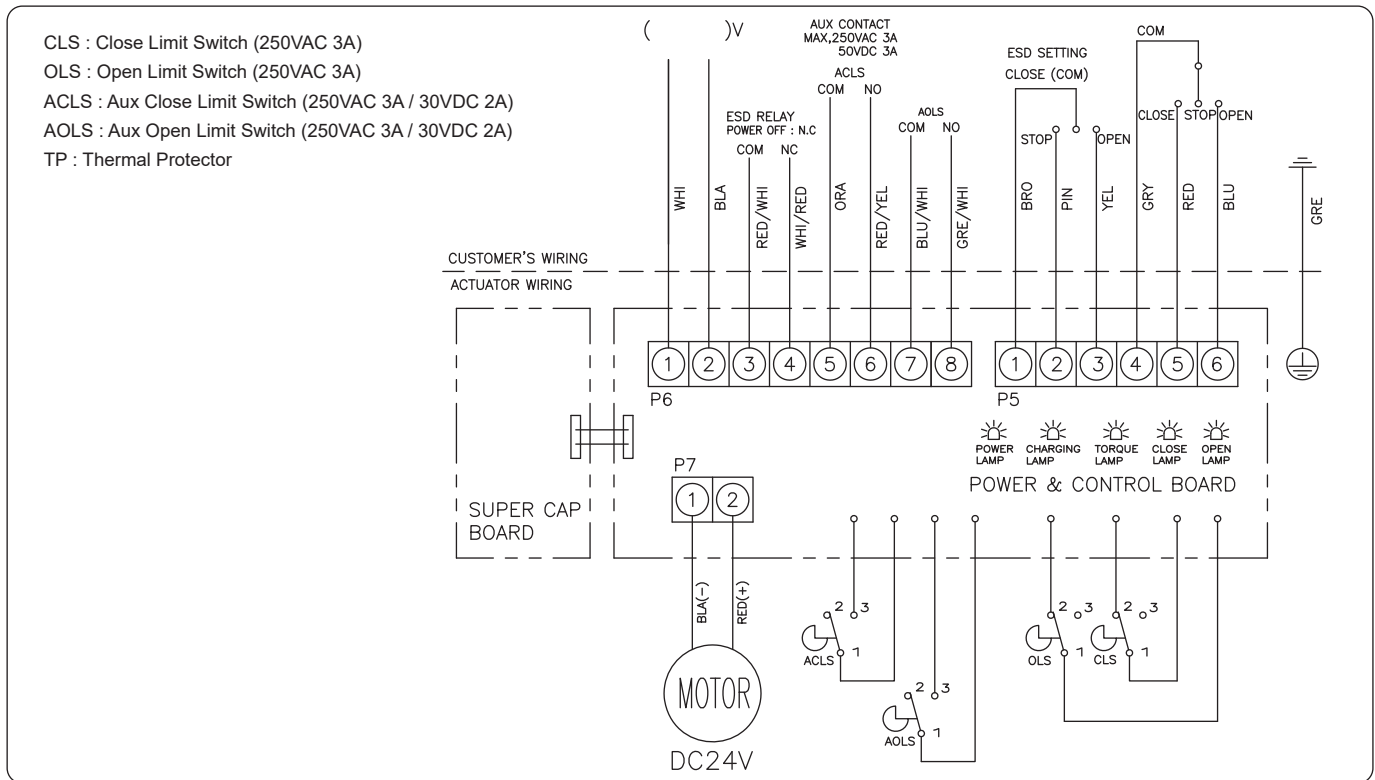
E X P	Explosion proof / Ex d IIB T4
-------	-------------------------------

BUILT IN SUPER CAPACITOR SPECIFICATION

Number of Emergency Operating	1 travel (Open to Close or Close to Open)	Charging Current	DC24V	2.4A
Charging Voltage	26.5V		DC48V	1.3A
Charging Time	DC24/DC48V: 2 min and 15 sec 110/220V: 4 min and 30 sec		110V	1A
			220V	0.6A

⚠ Charge up a super capacitor before use. If the capacitor is not fully charged, emergency operating is not available.

STANDARD WIRING



DIMENSION

